



Knight Piésold
CONSULTING

uMkhomazi Project

Module 3 - Potable Water

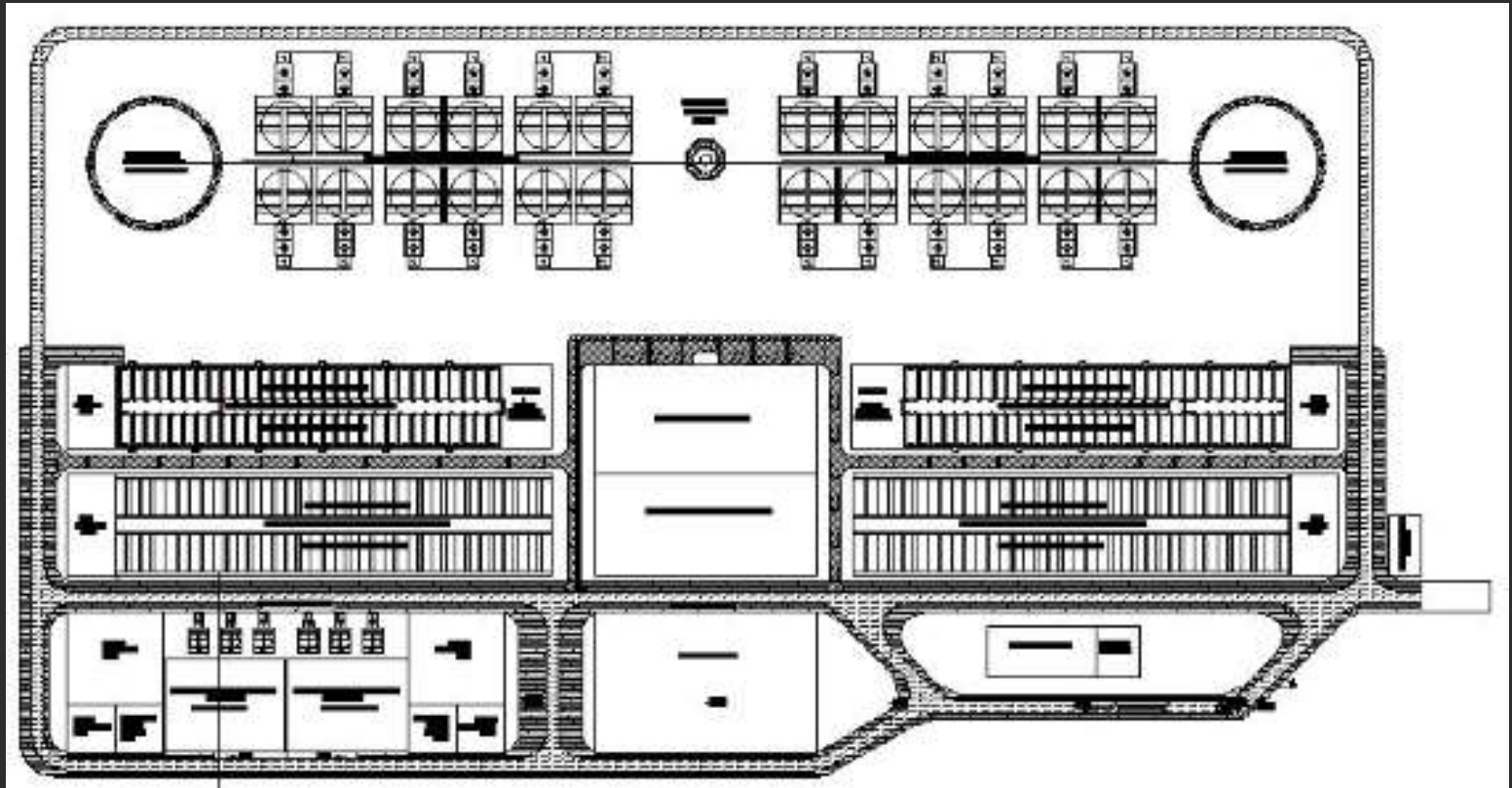
PSC Meeting

03 September 2013

Water Treatment Works Details

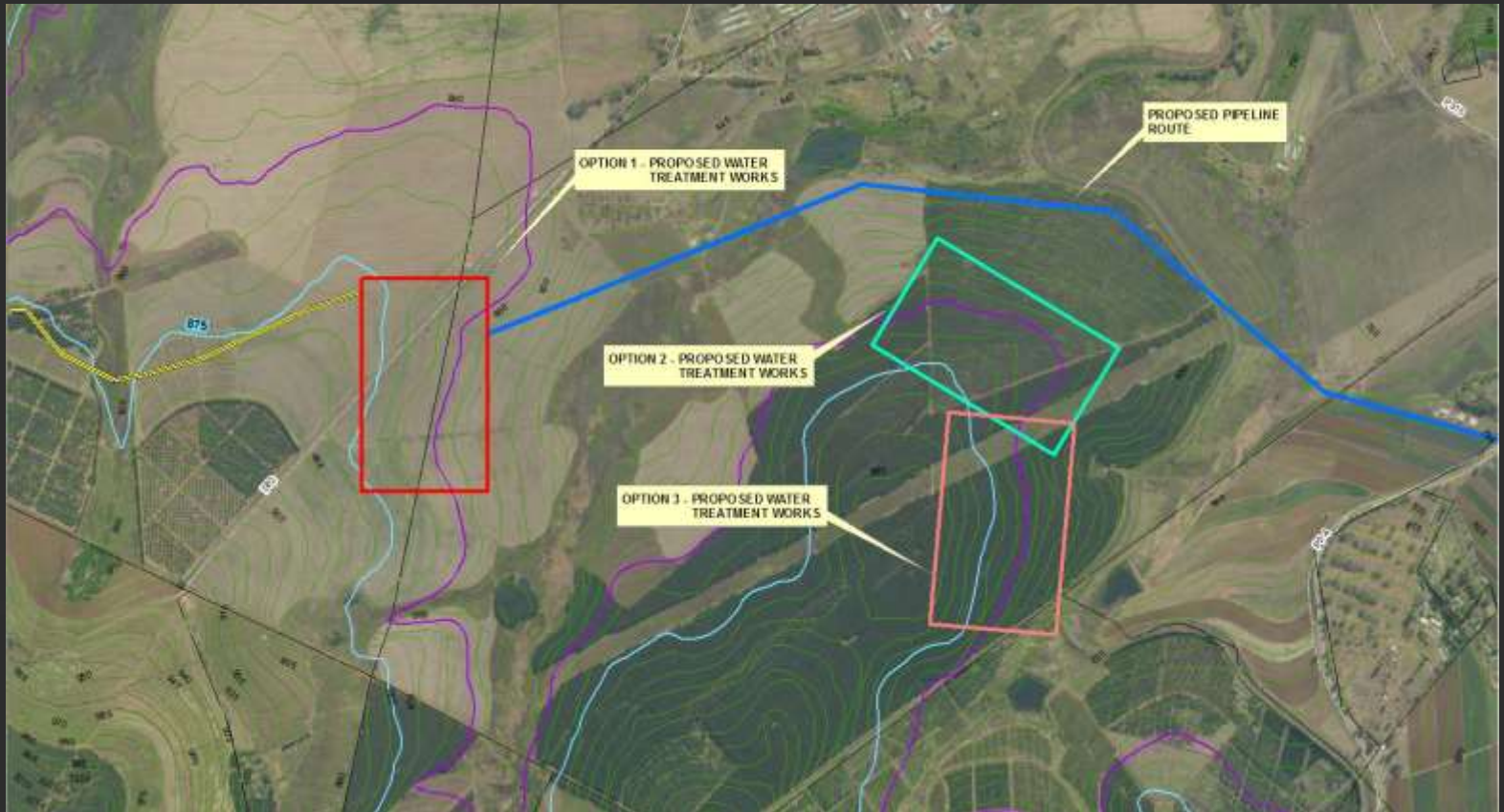
- Ultimate capacity: 1500 Megalitres / day
- 6 x 250 MI/d modules
- Footprint: 600 metres x 350 metres (for the full 1500 MI/d treatment capacity)
- Modular design and construction

Water treatment works layout

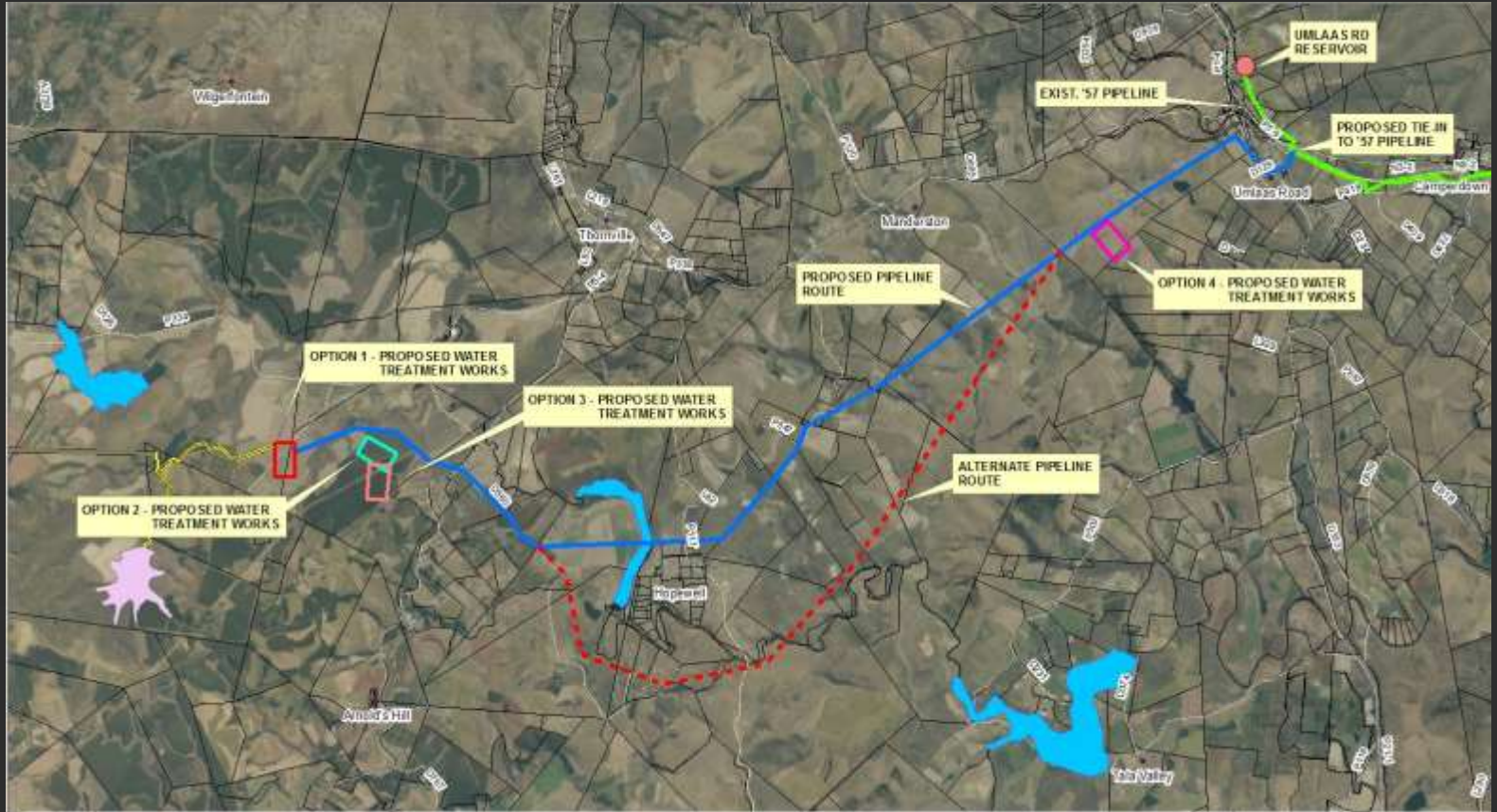


Knicht Piésold

Water treatment works locations



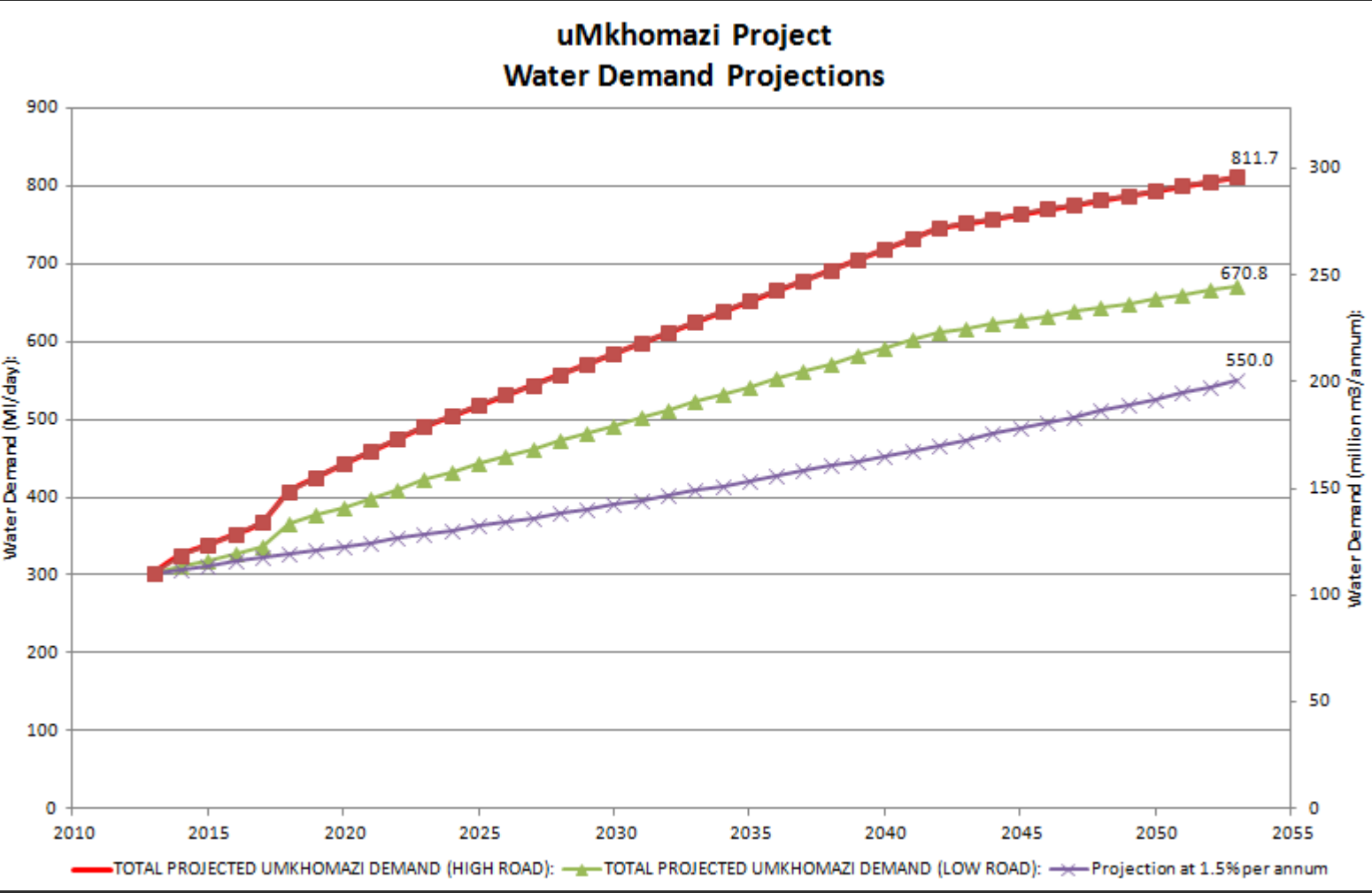
Pipeline routes



Potable Water Pipeline Details

- Gravity pipeline link to Umlaas Road
- 2.1 metre diameter thin-walled steel pipelines
- Twin pipelines will provide 750 ML/d capacity (phased as needed)
- Routing avoids high elevations to maintain gravity flow
- Total length: 21.3 km (24.5 km alternate route)

Water Demands



Knight Piésold

Upcoming tasks

- Engineering survey
- Geotechnical investigations
- Final costing
- Final reports



Knight Piésold
CONSULTING

Thank you!

KPI